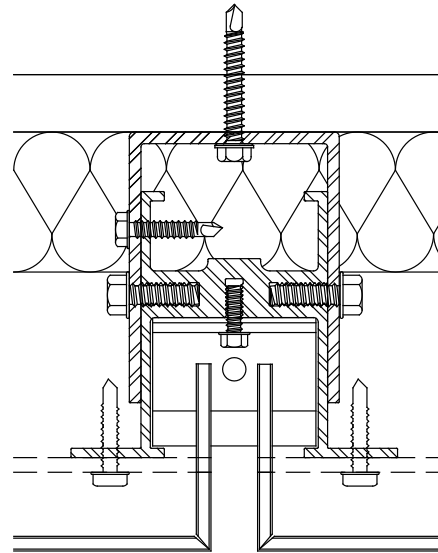
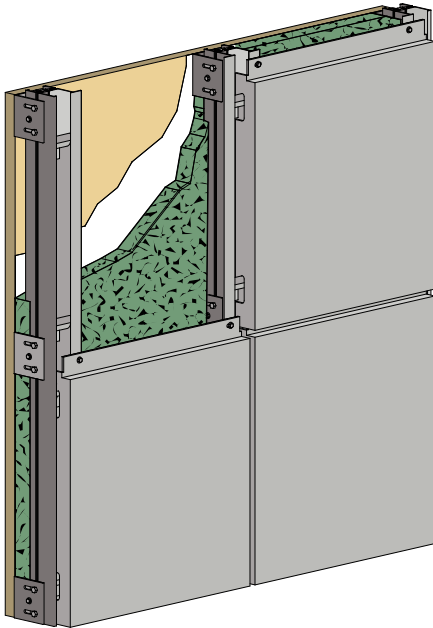




**METAL
DESIGN
SYSTEMS**

DESIGNED FOR
A PERFECT FIT.

SERIES 72 PRESSURE EQUALIZED HOOK & PIN RAINSCREEN



THE SERIES 72 is a hook and pin style system with no caulk or silicone and virtually maintenance free. This panel system features a continuous vertical channel with adjustable panel support pins. The panel returns are notched to hook over the support pins. This completed system is very clean and attractive.

SERIES 72 System Features

System	Pressure Equalized Rainscreen
Joint Type/Size	Open Joint - No Caulk
Progressive System	Non-sequential
Underlayment	Air and Water Barrier Recommended
Sheathing Over Studs	5/8" Plywood Preferred
Curved Surfaces	Moderate-Difficult
Independently Tested	ASTM E283, E331, E330, E1233, & AAMA 501, 508
Maintenance Free	Yes
Allow for Thermal Expansion	Yes
Price	Moderate
Weather Sealed System	Passed AAMA 508-07
Ease of Installation	Easy

SERIES 72 PRESSURE EQUALIZED HOOK & PIN RAINSCREEN

Face Material:

- Alpolic
- Reynobond
- Aluminum Plate
- Stainless Steel Plate

Thickness:

- 3MM (.118") Special Order
- 4MM (.157") Standard
- 6MM (.236") Special Order
- .080 - .125" Aluminum Plate
- 20GA - 14GA Stainless Plate

System Depth:

2-1/2" minimum

Performance Testing:

- ASTM E 283 - Static Air Infiltration
- ASTM E 331 - Static Water Infiltration
- ASTM E 330 - Structural Design Loads (70psf)
- ASTM E 1233 - Cyclic Air Pressure
- AAMA 501 - Dynamic Water Infiltration
- AAMA 508 - Pressure Equalized Rainscreen

Recommended Panel Module Sizes:

ACM - Any Combination of Width & Length

Width	Length
58"	192"
46"	142"
26"	94"
20"	68"
16"	61"

Aluminum Stainless Plate - Please call

System Extrusions:

Aluminum Alloy: 6063-T6

Fabricated Panel Tolerance:

- Width: 0.08"
- Length: 0.08"
- Pan Depth 0.04"
- Square: 0.2"
- Bow: Max. 0.57% of length and/or width

Maximum Panel Size:

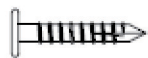
58" x 192"

Joint Width:

1/2" Standard

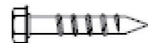
SERIES 70 Recommended Fasteners

Dyna-Coat Torx
T-17 12-11 x 1-1/4"



For attaching extrusions to wood substrate when a low profile head is required. 1" penetration into wood required.

#12 Wood Screw



For attaching extrusions or attachment clips to wood surfaces. Must be long enough to penetrate 1" into wood.

Dril-Flex #12 or equal



For attaching extrusions to aluminum or steel surfaces. Must be long enough to penetrate with at least 3 threads visible from back side of attachment.

1/4" Tapcon



Use for attachment of clips and extrusion to masonry surfaces. Minimum 2" from any edge to avoid structural spalling.



**METAL
DESIGN
SYSTEMS**
DESIGNED FOR
A PERFECT FIT.

4150 C Street SW | P.O. Box 1165 | Cedar Rapids, IA | 52406-1165

319-362-7454 | Toll Free 866-442-6803 | Fax 319-396-2935

METALDESIGNSYSTEMS.COM