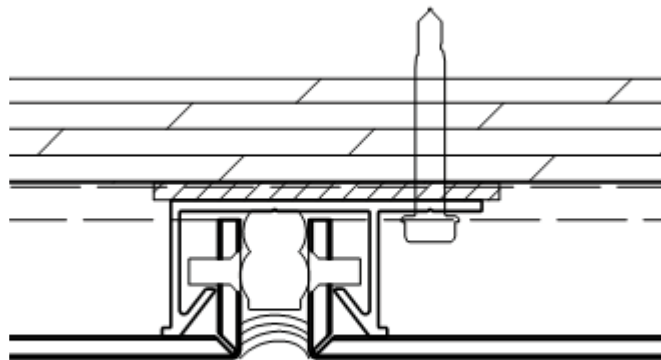
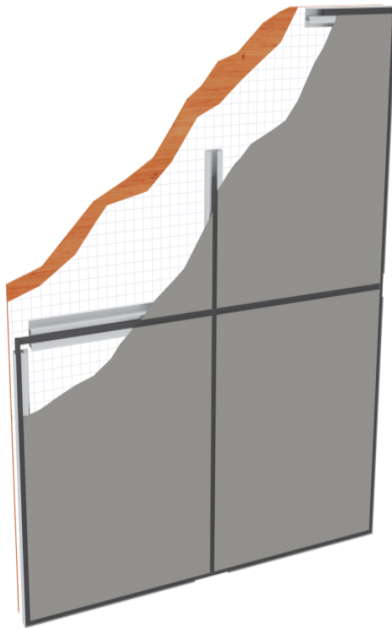


**SERIES 40** NON-PROGRESSIVE



**METAL  
DESIGN  
SYSTEMS**

DESIGNED FOR  
A PERFECT FIT.



**SERIES 40** is easy to install due to the semi-continuous attachment extrusions and the innovative lock-in-place backer wedge. This system is available as a wet sealed caulk system. Since the Series 40 is a non-progressive system, any panel can be removed or replaced without removing adjacent panels, further adding to the desirability of this system. Series 40, when installed offers clean lines, optimizes panel to panel alignment, and allows for thermal movement.

**SERIES 40** System Features

System	Non-Progressive
Joint Type/Size	Caulked
Progressive System	Non-Progressive Installation
Weather Barrier	Tyvek-Commercial Wrap Min.
Sheathing Over Studs	Not required - 3/4" Plywood Preferred
Curved Surfaces	Excellent for Radius Applications
Independently Tested	ASTM E283, E331, E330, AAMA 501 & NFPA 285
Maintenance Free	No
Price	Medium Priced
Weather Sealed System	Yes
Ease of Installation	Easy

# SERIES 40 NON-PROGRESSIVE

**Face Material:**

- Alpolic
- Alucobond
- Reynobond
- Larson
- See Manufacture's Product Data for Technical Information*

**Recommended MCM Panel Module Sizes:**

*Any Combination of Width & Length*

Width	Length
60"	192"
48"	144"
28"	96"
22"	70"
18"	63"

**Thickness:**

4MM (.157") Standard MCM

**Panel Tolerance:**

- Width: 0.08"
- Length: 0.08"
- Thickness: 0.04"
- Square: 0.2"
- Bow: Max. 0.57% of length and/or width

**System Depth:**

1 1/8" minimum, 2 1/4" design

**Panel Extrusions:**

- Aluminum Alloy: 6063-T6
- Panel Perimeter Extrusion: Semi-Continuous

**Performance Testing:**

- ASTM E 283 - Static Air Infiltration
- ASTM E 331 - Static Water Infiltration
- AAMA 501 - Dynamic Water Infiltration
- ASTM E 330 - Structural Design Loads (40psf)
- NFPA 285

**Maximum Panel Size:**

60" x 192"

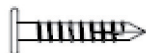
**Joint Width:**

1/2"

Note: Certain combinations of material, thickness, sizes and/or colors may not be available or be different than what is represented here.

## SERIES 40 Recommended Fasteners

300 Series SS  
T-17 12-11 x 1-1/4"  
Pancake Head



For attaching extrusions to wood substrate when a low profile head is required. 1" penetration into wood required.

300 Series SS  
#12 Wood Screw  
Hex Washer Head



For attaching extrusions or attachment clips to wood surfaces. Must be long enough to penetrate 1" into wood.

#12 Self Drilling  
With Corrosion  
Resistant Coating



For attaching extrusions to aluminum or steel surfaces. Must be long enough to penetrate with at least 3 threads visible from back side of attachment.

1/4" Tapcon



Use for attachment of clips and extrusion to masonry surfaces. Minimum 2" from any edge to avoid structural spalling.



**METAL  
DESIGN  
SYSTEMS**

DESIGNED FOR  
A PERFECT FIT.

4150 C Street SW | Cedar Rapids, IA | 52404

319-362-7454 | Toll Free 866-442-6803 | Fax 319-362-7456

**METALDESIGNSYSTEMS.COM**