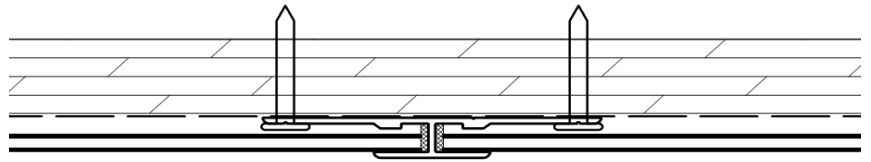
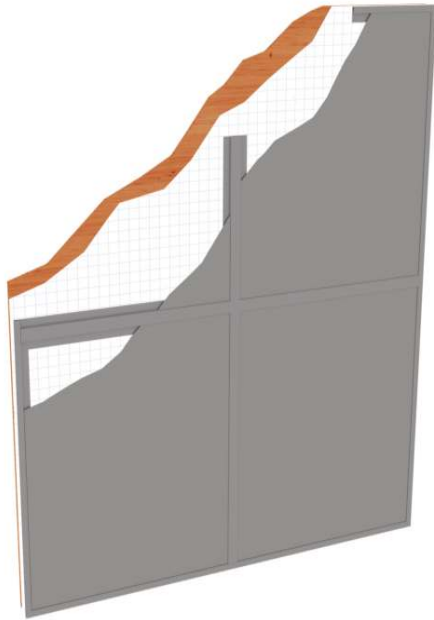


SERIES 30 BATTEN STRIP



**METAL
DESIGN
SYSTEMS**

DESIGNED FOR
A PERFECT FIT.



THE SERIES 30 utilizes flat panels with an exposed trim attachment. This system is very cost effective and lends itself to be easily installed and modified in the field. Series 30 is typically specified when conditions call for a unique color brand or a radius application. It can be utilized in conjunction with our other systems to achieve a high polished look at an economical price.

SERIES 30 System Features

System	Batten Strip
Joint Type/Size	Exposed Extrusion
Progressive System	Progressive Installation
Weather Barrier	Self Adhered or Fluid Applied
Sheathing Over Studs	Required - 3/4" Plywood Preferred
Curved Surfaces	Easy
Independently Tested	No
Maintenance Free	Yes
Price	Lowest Priced
Weather Sealed System	No
Ease of Installation	Medium
System Type	Rainscreen Secondary Defense

SERIES 30 Batten Strip

Face Material:

- Alpolic
 - Alucobond
 - Reynobond
 - Larson 4-MM Aluminum Sheet
- See Manufacturer's Product Data for Technical Information*

Thickness:

4MM (.157") Standard

System Depth:

3/8" minimum

Joint Width:

- 1" wide battens
- 1/2" reveal battens

Maximum Panel Size:

60" x 192"

Recommended MCM Panel Module Sizes:

Any Combination of Width & Length

Width	Length
60"	192"
48"	144"
28"	96"
22"	70"
18"	63"

Panel Tolerance:

- Width: 0.08"
- Length: 0.08"
- Thickness: 0.04"
- Square: 0.2"
- Bow: Max. 0.57% of length and/or width

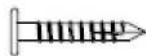
Panel Extrusions:

- Aluminum Alloy: 6063-T6
- Panel Perimeter Extrusion: Continuous
- Powder Coated to Match Panels

Note: Certain combinations of material, thickness, sizes and/or colors may not be available or be different than what is represented here.

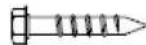
SERIES 30 Recommended Fasteners

300 Series SS
T-17 12-11 x 1-1/4"
Pancake Head



For attaching extrusions to wood substrate when a low profile head is required. 1" penetration into wood required.

300 Series SS
#12 Wood Screw
Hex Washer Head



For attaching extrusions or attachment clips to wood surfaces. Must be long enough to penetrate 1" into wood.

Bi Metal @12 Self Dri
With Corrosion Resis
Coating



For attaching extrusions to aluminum or steel surfaces. Must be long enough to penetrate with at least 3 threads visible from back side of attachment.

Stainless Steel
1/4" Tapcon



Use for attachment of clips and extrusion to masonry surfaces. Minimum 2" from any edge to avoid structural spalling.



**METAL
DESIGN
SYSTEMS**

DESIGNED FOR
A PERFECT FIT.

4150 C Street SW | Cedar Rapids, IA | 52404

319-362-7454 | Toll Free 866-442-6803 | Fax 319-362-7456

METALDESIGNSYSTEMS.COM