
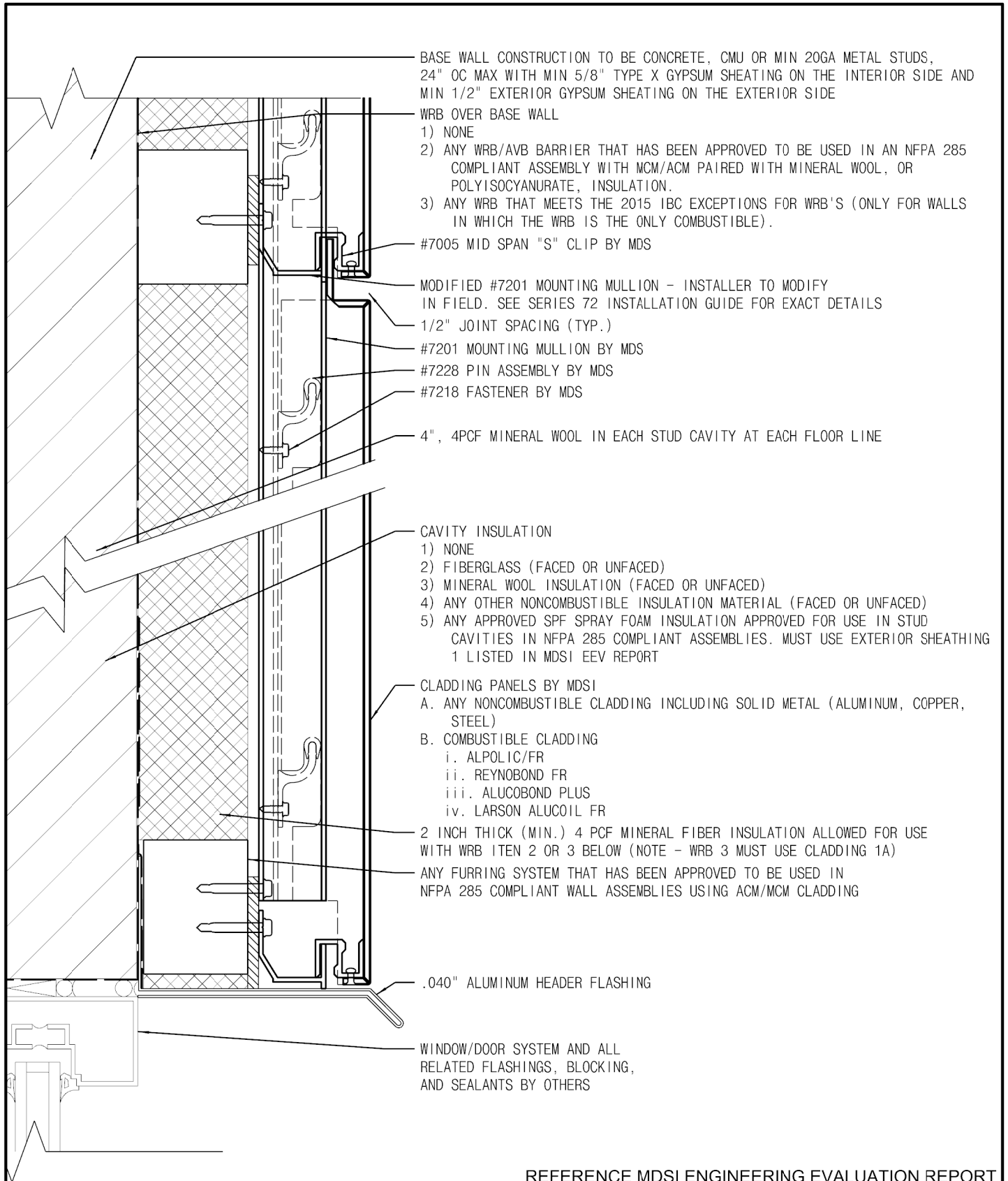



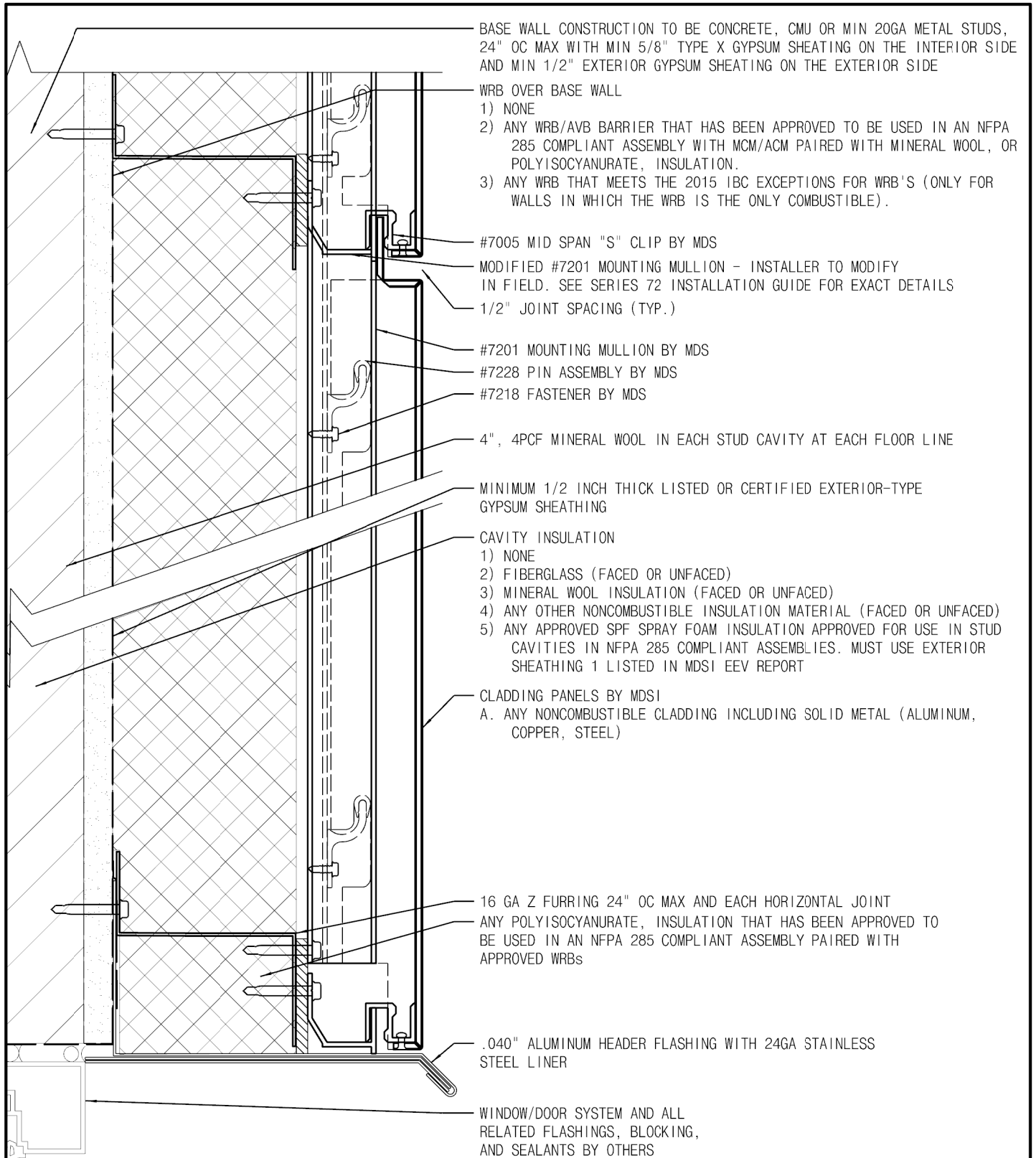
REFERENCE MDSI ENGINEERING EVALUATION REPORT

<p>THE INFORMATION CONTAINED IN THIS DRAWING IS THE SOLE PROPERTY OF METAL DESIGN SYSTEMS. ANY REPRODUCTION IN PART OR WHOLE WITHOUT THE WRITTEN PERMISSION OF METAL DESIGN SYSTEMS IS PROHIBITED</p>	 <p>METAL DESIGN SYSTEMS DESIGNED FOR A PERFECT FIT</p>	METAL DESIGN SYSTEMS		PROJECT: SERIES 72 NFPA - 285		
		4150 C Street S.W. Cedar Rapids, Ia. 52404 Ph. (319) 362-7454		DRAWING DESCRIPTION: NO EXTERIOR INSULATION		
		MATERIAL: ...		PROJECT NUMBER: ...	DRAWING NUMBER: S72-NFPA-01	DATE: 8/30/2017
				SCALE: NTS	DRAWN BY: SC	




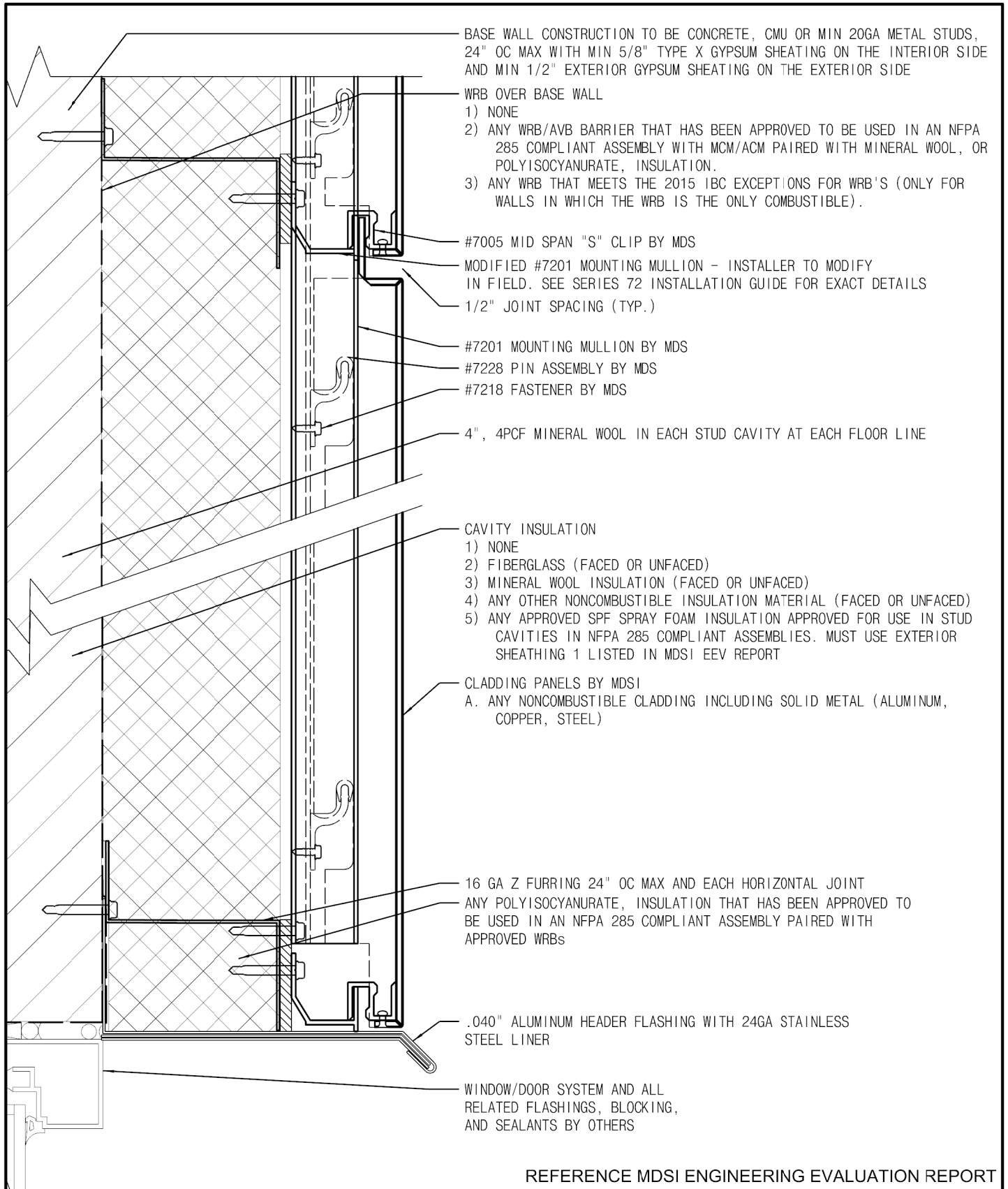
REFERENCE MDSI ENGINEERING EVALUATION REPORT

<p>THE INFORMATION CONTAINED IN THIS DRAWING IS THE SOLE PROPERTY OF METAL DESIGN SYSTEMS. ANY REPRODUCTION IN PART OR WHOLE WITHOUT THE WRITTEN PERMISSION OF METAL DESIGN SYSTEMS IS PROHIBITED</p>	 METAL DESIGN SYSTEMS <small>DESIGNED FOR A PERFECT FIT</small>	METAL DESIGN SYSTEMS		PROJECT: SERIES 72 NFPA - 285		
		4150 C Street S.W. Cedar Rapids, Ia. 52404 Ph. (319) 362-7454		DRAWING DESCRIPTION: FURRING SYSTEM WITH MINERAL FIBER INSULATION		
		MATERIAL: ...		PROJECT NUMBER: ...	DRAWING NUMBER: S72-NFPA-02	DATE: 8/30/2017
				SCALE: NTS	DRAWN BY: SC	




REFERENCE MDSI ENGINEERING EVALUATION REPORT

<p>THE INFORMATION CONTAINED IN THIS DRAWING IS THE SOLE PROPERTY OF METAL DESIGN SYSTEMS. ANY REPRODUCTION IN PART OR WHOLE WITHOUT THE WRITTEN PERMISSION OF METAL DESIGN SYSTEMS IS PROHIBITED</p>	 <p>METAL DESIGN SYSTEMS DESIGNED FOR A PERFECT FIT</p>	METAL DESIGN SYSTEMS		PROJECT: SERIES 72 NFPA - 285		
		4150 C Street S.W. Cedar Rapids, Ia. 52404 Ph. (319) 362-7454		DRAWING DESCRIPTION: POLY ISO INSULATION W/ GYP. SHEATHING		
		MATERIAL: ...		PROJECT NUMBER: ...	DRAWING NUMBER: S72-NFPA-03	DATE: 8/30/2017
				SCALE: NTS	DRAWN BY: SC	



REFERENCE MDSI ENGINEERING EVALUATION REPORT

<p>THE INFORMATION CONTAINED IN THIS DRAWING IS THE SOLE PROPERTY OF METAL DESIGN SYSTEMS. ANY REPRODUCTION IN PART OR WHOLE WITHOUT THE WRITTEN PERMISSION OF METAL DESIGN SYSTEMS IS PROHIBITED</p>	 METAL DESIGN SYSTEMS <small>DESIGNED FOR A PERFECT FIT</small>	METAL DESIGN SYSTEMS		PROJECT: SERIES 72 NFPA - 285		
		4150 C Street S.W. Cedar Rapids, Ia. 52404 Ph. (319) 362-7454		DRAWING DESCRIPTION: POLY ISO INSULATION W/O GYP. SHEATHING		
		MATERIAL: ...		PROJECT NUMBER: ...	DRAWING NUMBER: S72-NFPA-04	DATE: 8/30/2017
				SCALE: NTS	DRAWN BY: SC	