


REFERENCE MDSI ENGINEERING EVALUATION REPORT

<p>THE INFORMATION CONTAINED IN THIS DRAWING IS THE SOLE PROPERTY OF METAL DESIGN SYSTEMS. ANY REPRODUCTION IN PART OR WHOLE WITHOUT THE WRITTEN PERMISSION OF METAL DESIGN SYSTEMS IS PROHIBITED</p>	 <b>METAL DESIGN SYSTEMS</b> <small>DESIGNED FOR A PERFECT FIT</small>	<b>METAL DESIGN SYSTEMS</b>		PROJECT: <b>SERIES 70 NFPA - 285</b>		
		4150 C Street S.W. Cedar Rapids, Ia. 52404 Ph. (319) 362-7454		DRAWING DESCRIPTION: <b>NO EXTERIOR INSULATION</b>		
		MATERIAL: ...		PROJECT NUMBER: ...	DRAWING NUMBER: <b>S70-NFPA-01</b>	DATE: <b>8/30/2017</b>
				SCALE: <b>NTS</b>	DRAWN BY: <b>SC</b>	

BASE WALL CONSTRUCTION TO BE CONCRETE, CMU OR MIN 20GA METAL STUDS, 24" OC MAX WITH MIN 5/8" TYPE X GYPSUM SHEATING ON THE INTERIOR SIDE AND MIN 1/2" EXTERIOR GYPSUM SHEATING ON THE EXTERIOR SIDE

WRB OVER BASE WALL

1) NONE

2) ANY WRB/AVB BARRIER THAT HAS BEEN APPROVED TO BE USED IN AN NFPA 285 COMPLIANT ASSEMBLY WITH MCM/ACM PAIRED WITH MINERAL WOOL, OR POLYISOCYANURATE, INSULATION.

3) ANY WRB THAT MEETS THE 2015 IBC EXCEPTIONS FOR WRB'S (ONLY FOR WALLS IN WHICH THE WRB IS THE ONLY COMBUSTIBLE).

#7009 and #7010 TIE-BACK BRACKET BY MDS

#7005 EXTRUSION BY MDS

#7020 FASTENER BY MDS

#7002 EXTRUSION BY MDS

#7008 PIN BULB BY MDS

#7006 ATTACHMENT PIN BY MDS

#7018 FASTENER BY MDS

4", 4PCF MINERAL WOOL IN EACH STUD CAVITY AT EACH FLOOR LINE

CAVITY INSULATION

1) NONE

2) FIBERGLASS (FACED OR UNFACED)

3) MINERAL WOOL INSULATION (FACED OR UNFACED)

4) ANY OTHER NONCOMBUSTIBLE INSULATION MATERIAL (FACED OR UNFACED)

5) ANY APPROVED SPF SPRAY FOAM INSULATION APPROVED FOR USE IN STUD

CAVITIES IN NFPA 285 COMPLIANT ASSEMBLIES. MUST USE EXTERIOR SHEATHING 1 LISTED IN MDSI EEV REPORT

PATCH AT ALL WRB PENETRATIONS PER MANUFACTURER STANDARDS BY INSTALLER

#7020 FASTENER BY MDS

#7004 ANCHOR CHANNEL OR #7014 ANCHOR ANGLE BY MDSI

#7019 FASTENER BY MDS

CLADDING PANELS BY MDSI

A. ANY NONCOMBUSTIBLE CLADDING INCLUDING SOLID METAL (ALUMINUM, COPPER, STEEL)

B. COMBUSTIBLE CLADDING

i. ALPOLIC/FR

ii. REYNOBOND FR

iii. ALUCOBOND PLUS

iv. LARSON ALUCOIL FR

2 INCH THICK (MIN.) 4 PCF MINERAL FIBER INSULATION ALLOWED FOR USE WITH WRB ITEN 2 OR 3 BELOW (NOTE - WRB 3 MUST USE CLADDING 1A)

.040" ALUMINUM HEADER FLASHING

WINDOW/DOOR SYSTEM AND ALL RELATED FLASHINGS, BLOCKING, AND SEALANTS BY OTHERS

#### REFERENCE MDSI ENGINEERING EVALUATION REPORT

THE INFORMATION CONTAINED IN THIS DRAWING IS THE SOLE PROPERTY OF METAL DESIGN SYSTEMS. ANY REPRODUCTION IN PART OR WHOLE WITHOUT THE WRITTEN PERMISSION OF METAL DESIGN SYSTEMS IS PROHIBITED



**METAL DESIGN SYSTEMS**

4150 C Street S.W.  
Cedar Rapids, Ia. 52404  
Ph. (319) 362-7454

MATERIAL: ...

PROJECT:

**SERIES 70 NFPA - 285**

DRAWING DESCRIPTION:

FURRING SYSTEM WITH MINERAL FIBER INSULATION

PROJECT NUMBER:

...

DRAWING NUMBER:

**S70-NFPA-02**

DATE:

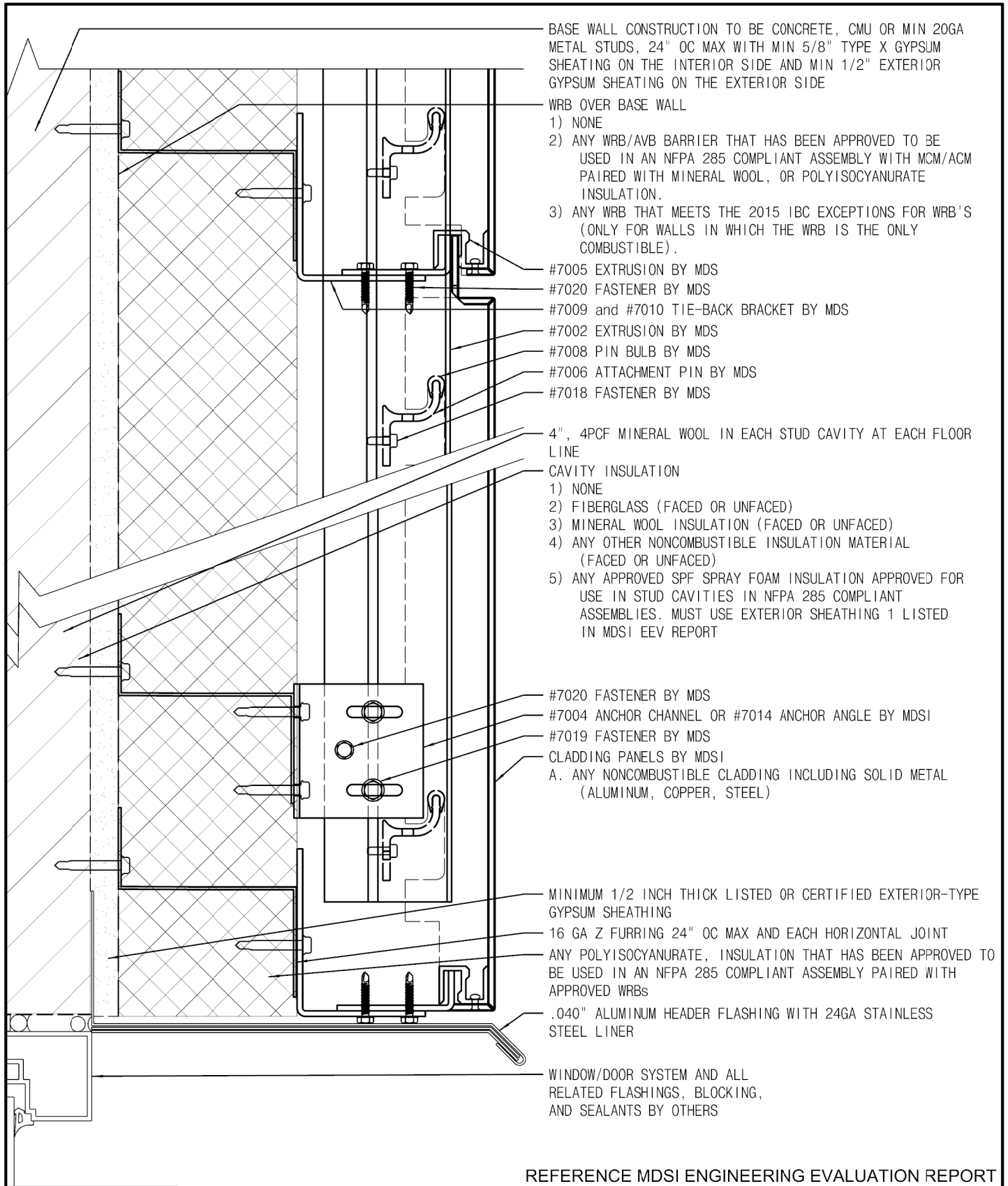
**8/30/2017**

SCALE:


**NTS**

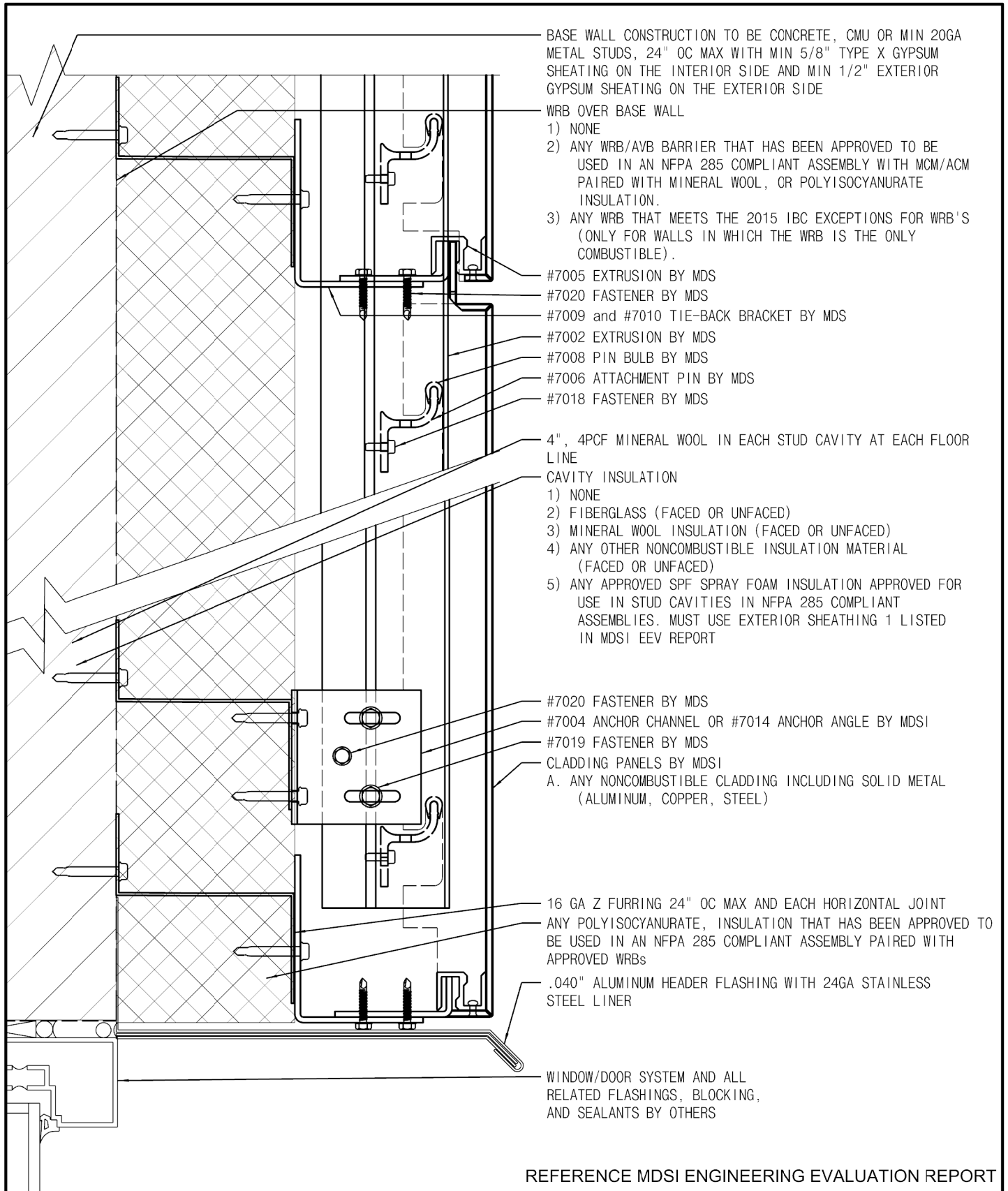
DRAWN BY:

**SC**




REFERENCE MDSI ENGINEERING EVALUATION REPORT

<p>THE INFORMATION CONTAINED IN THIS DRAWING IS THE SOLE PROPERTY OF METAL DESIGN SYSTEMS. ANY REPRODUCTION IN PART OR WHOLE WITHOUT THE WRITTEN PERMISSION OF METAL DESIGN SYSTEMS IS PROHIBITED</p>	 <p><b>METAL DESIGN SYSTEMS</b> DESIGNED FOR A PERFECT FIT</p>	<b>METAL DESIGN SYSTEMS</b>		PROJECT: <b>SERIES 70 NFPA - 285</b>		
		4150 C Street S.W. Cedar Rapids, Ia. 52404 Ph. (319) 362-7454		DRAWING DESCRIPTION: POLY ISO INSULATION W/ GYP. SHEATHING		
		MATERIAL: ...		PROJECT NUMBER: ...	DRAWING NUMBER: S70-NFPA-03	DATE: 8/30/2017
				SCALE: NTS	DRAWN BY: SC	



REFERENCE MDSI ENGINEERING EVALUATION REPORT

<p>THE INFORMATION CONTAINED IN THIS DRAWING IS THE SOLE PROPERTY OF METAL DESIGN SYSTEMS. ANY REPRODUCTION IN PART OR WHOLE WITHOUT THE WRITTEN PERMISSION OF METAL DESIGN SYSTEMS IS PROHIBITED</p>	 <b>METAL DESIGN SYSTEMS</b> <small>DESIGNED FOR A PERFECT FIT</small>	<b>METAL DESIGN SYSTEMS</b>		PROJECT: <b>SERIES 70 NFPA - 285</b>		
		4150 C Street S.W. Cedar Rapids, Ia. 52404 Ph. (319) 362-7454		DRAWING DESCRIPTION: POLY ISO INSULATION W/O GYP. SHEATHING		
		MATERIAL: ...		PROJECT NUMBER: ...	DRAWING NUMBER: <b>S70-NFPA-04</b>	DATE: <b>8/30/2017</b>
				SCALE: <b>NTS</b>	DRAWN BY: <b>SC</b>	