

BASE WALL CONSTRUCTION TO BE CONCRETE, CMU OR MIN 20GA METAL STUDS, 24" OC MAX WITH MIN 5/8" TYPE X GYPSUM SHEATHING ON THE INTERIOR SIDE AND MIN 1/2" EXTERIOR GYPSUM SHEATHING ON THE EXTERIOR SIDE

PATCH AT ALL WRB PENETRATIONS PER MANUFACTURER STANDARDS BY INSTALLER

SHIMS AND STAINLESS STEEL FASTENERS BY INSTALLER (SIZE, TYPE AND QUANTITY TO BE APPROPRIATE FOR CONDITIONS 16" O.C. MAX)

FACTORY INSTALLED STAINLESS STEEL RIVET

#4404 SNAP COVER AND #4403 CLIP BY MDSI

#4402 EXTRUSION BY MDSI

4", 4PCF MINERAL WOOL IN EACH STUD CAVITY AT EACH FLOOR LINE

CAVITY INSULATION

- 1) NONE
- 2) FIBERGLASS (FACED OR UNFACED)
- 3) MINERAL WOOL INSULATION (FACED OR UNFACED)
- 4) ANY OTHER NONCOMBUSTIBLE INSULATION MATERIAL (FACED OR UNFACED)
- 5) ANY APPROVED SPF SPRAY FOAM INSULATION APPROVED FOR USE IN STUD CAVITIES IN NFPA 285 COMPLIANT ASSEMBLIES. MUST USE EXTERIOR SHEATHING 1 LISTED IN MDSI EEV REPORT

WRB OVER BASE WALL

- 1) NONE
- 2) ANY WRB/AVB BARRIER THAT HAS BEEN APPROVED TO BE USED IN AN NFPA 285 COMPLIANT ASSEMBLY WITH MCM/ACM PAIRED WITH MINERAL WOOL, OR POLYISOCYANURATE, INSULATION.
- 3) ANY WRB THAT MEETS THE 2015 IBC EXCEPTIONS FOR WRB'S (ONLY FOR WALLS IN WHICH THE WRB IS THE ONLY COMBUSTIBLE).

CLADDING PANELS BY MDSI

- A. ANY NONCOMBUSTIBLE CLADDING INCLUDING SOLID METAL (ALUMINUM, COPPER, STEEL)
- B. COMBUSTIBLE CLADDING
 - i. ALPOLIC/FR
 - ii. REYNOBOND FR
 - iii. ALUCOBOND PLUS
 - iv. LARSON ALUCOIL FR

STRIP IN FLASHING TO WATER RESISTIVE BARRIER (WRB) PER MANUFACTURERS STANDARDS BY INSTALLER

SHIMS AND STAINLESS STEEL FASTENERS BY INSTALLER (SIZE, TYPE AND QUANTITY TO BE APPROPRIATE FOR CONDITIONS 16" O.C. MAX)

#4401 EXTRUSION BY MDSI

FACTORY INSTALLED STAINLESS STEEL RIVET

#4404 SNAP COVER AND #4403 CLIP BY MDSI

1/4" GAP (RECOMMENDED) FOR VENTING/WEeping OF SYSTEM

.040" ALUMINUM HEADER FLASHING

WINDOW/DOOR SYSTEM AND ALL RELATED FLASHINGS, BLOCKING, AND SEALANTS BY OTHERS

REFERENCE MDSI ENGINEERING EVALUATION REPORT

THE INFORMATION CONTAINED IN THIS DRAWING IS THE SOLE PROPERTY OF METAL DESIGN SYSTEMS. ANY REPRODUCTION IN PART OR WHOLE WITHOUT THE WRITTEN PERMISSION OF METAL DESIGN SYSTEMS IS PROHIBITED



METAL DESIGN SYSTEMS

4150 C Street S.W.
Cedar Rapids, Ia. 52404
Ph. (319) 362-7454

MATERIAL:

PROJECT:

SERIES 44 NFPA - 285

DRAWING DESCRIPTION:

NO EXTERIOR INSULATION

PROJECT NUMBER:

DRAWING NUMBER:

S44-NFPA-01

DATE:

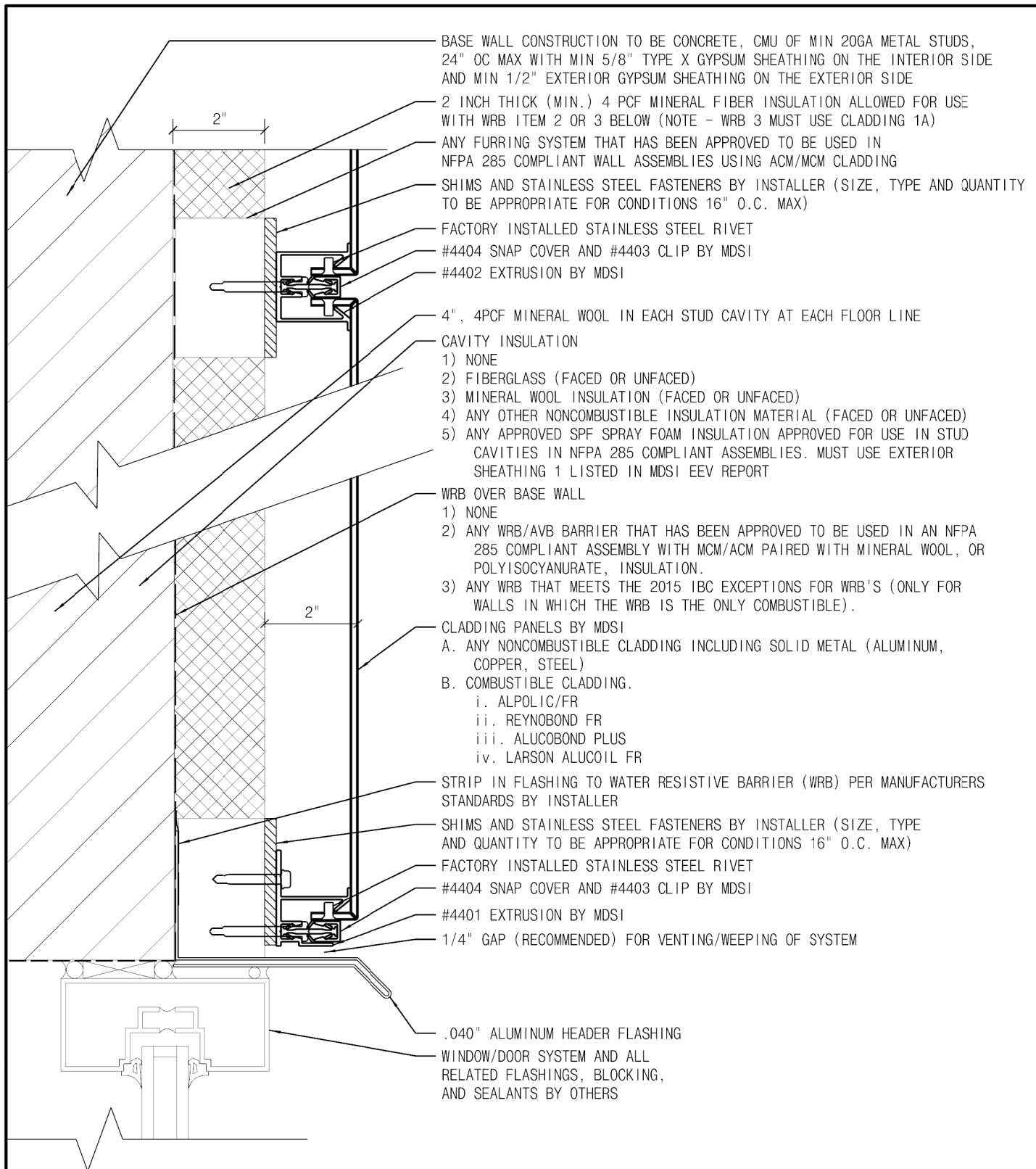
8/30/2017

SCALE:

NTS

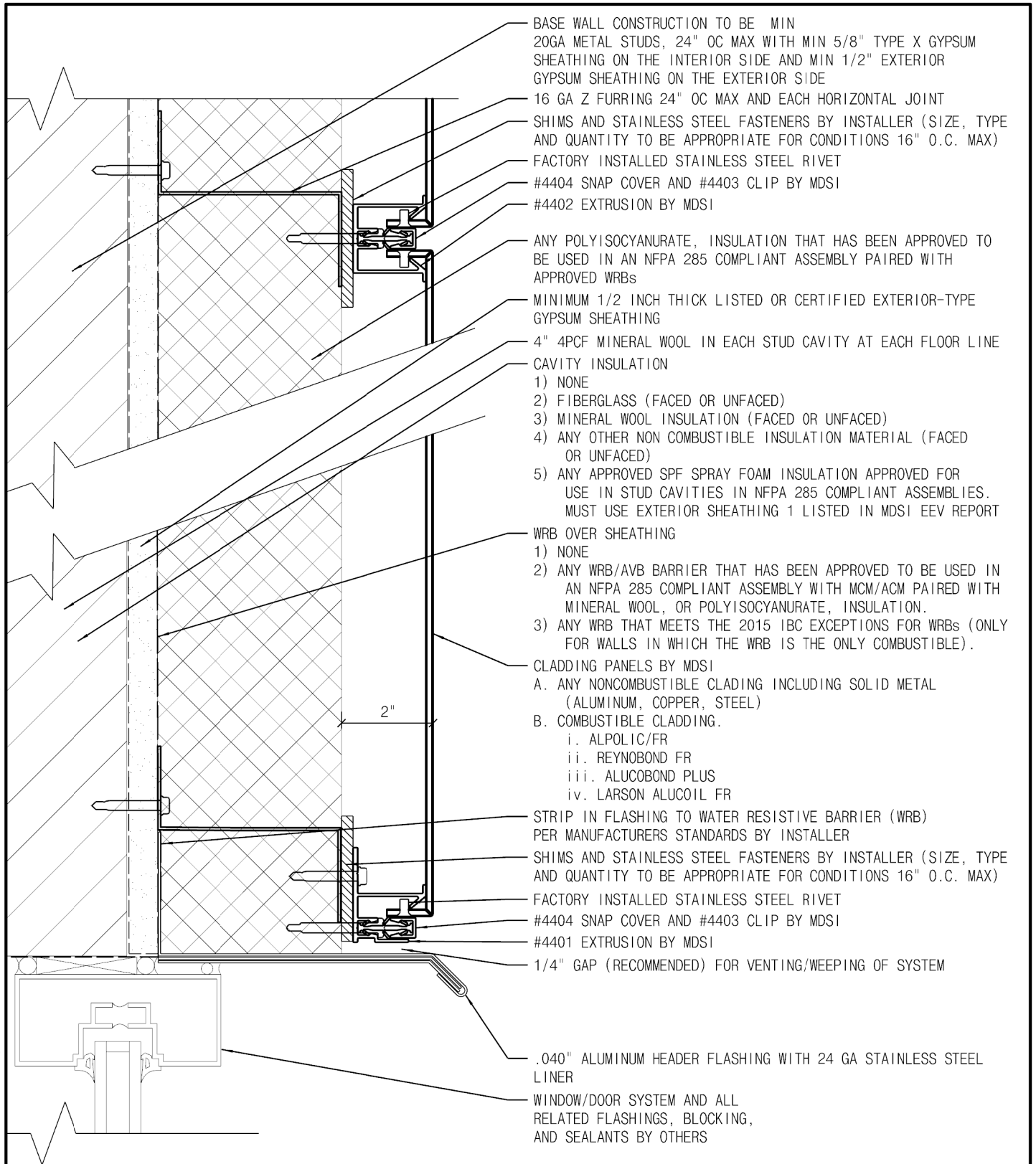
DRAWN BY:

SC




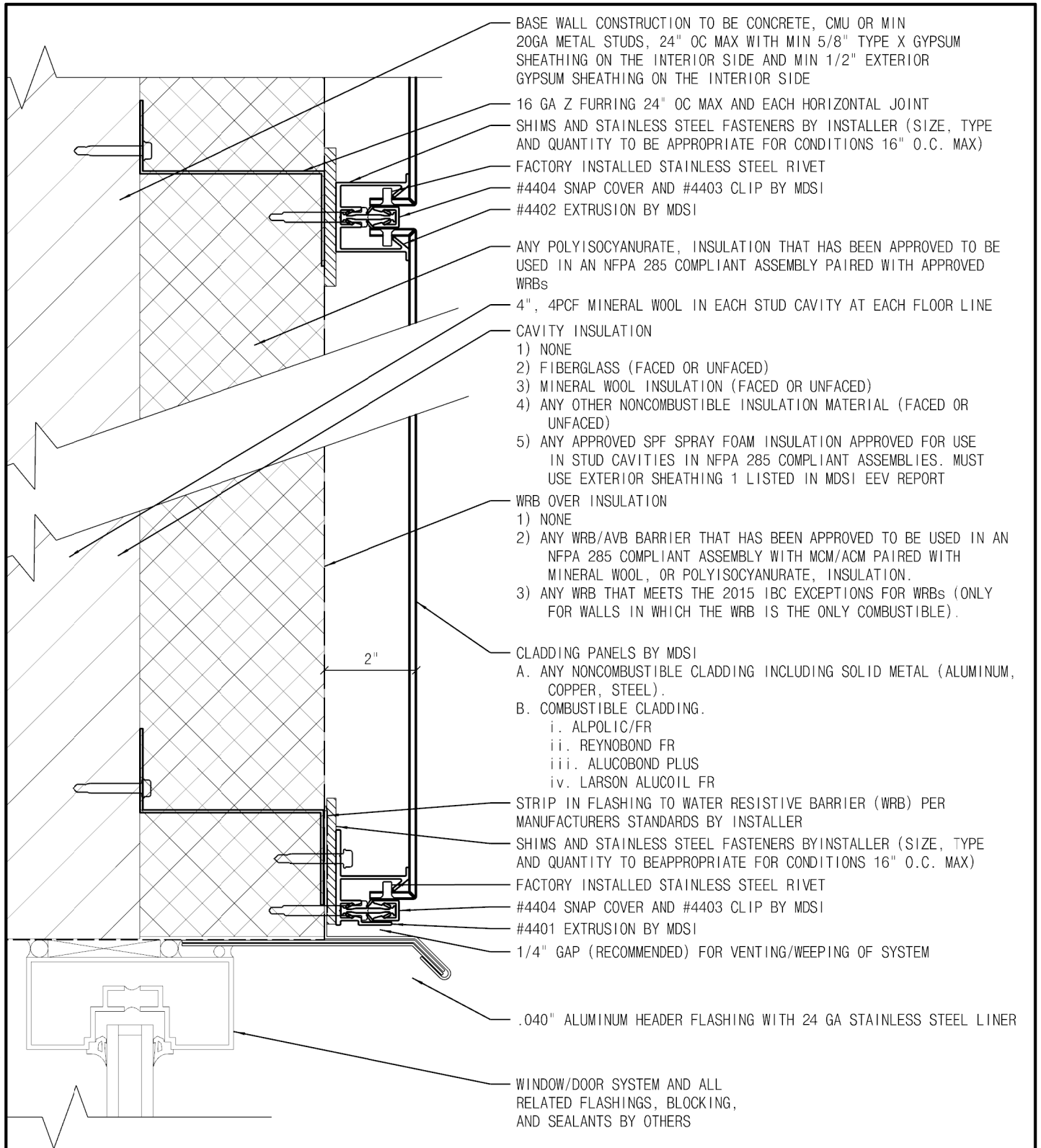
REFERENCE MDSI ENGINEERING EVALUATION REPORT

THE INFORMATION CONTAINED IN THIS DRAWING IS THE SOLE PROPERTY OF METAL DESIGN SYSTEMS. ANY REPRODUCTION IN PART OR WHOLE WITHOUT THE WRITTEN PERMISSION OF METAL DESIGN SYSTEMS IS PROHIBITED	 METAL DESIGN SYSTEMS <small>DESIGNED FOR A PERFECT FIT</small>	METAL DESIGN SYSTEMS		PROJECT: SERIES 44 NFPA - 285			
		4150 C Street S.W. Cedar Rapids, Ia. 52404 Ph. (319) 362-7454		DRAWING DESCRIPTION: FURRING SYSTEM WITH MINERAL FIBER INSULATION			
				PROJECT NUMBER:		DRAWING NUMBER: S44-NFPA-02	DATE: 8/30/2017
		MATERIAL:		SCALE: NTS		DRAWN BY: SC	




REFERENCE MDSI ENGINEERING EVALUATION REPORT

THE INFORMATION CONTAINED IN THIS DRAWING IS THE SOLE PROPERTY OF METAL DESIGN SYSTEMS. ANY REPRODUCTION IN PART OR WHOLE WITHOUT THE WRITTEN PERMISSION OF METAL DESIGN SYSTEMS IS PROHIBITED	 METAL DESIGN SYSTEMS <small>DESIGNED FOR A PERFECT FIT</small>	METAL DESIGN SYSTEMS		PROJECT: SERIES 44 NFPA - 285		
		4150 C Street S.W. Cedar Rapids, Ia. 52404 Ph. (319) 362-7454		DRAWING DESCRIPTION: POLY ISO INSULATION W/ GYP. SHEATHING		
		MATERIAL:		PROJECT NUMBER:	DRAWING NUMBER:	DATE:
					S44-NFPA-03	8/30/2017
				SCALE: NTS	DRAWN BY: SC	



REFERENCE MDSI ENGINEERING EVALUATION REPORT

THE INFORMATION CONTAINED IN THIS DRAWING IS THE SOLE PROPERTY OF METAL DESIGN SYSTEMS. ANY REPRODUCTION IN PART OR WHOLE WITHOUT THE WRITTEN PERMISSION OF METAL DESIGN SYSTEMS IS PROHIBITED	 METAL DESIGN SYSTEMS <small>DESIGNED FOR A PERFECT FIT</small>	METAL DESIGN SYSTEMS		PROJECT: SERIES 44 NFPA - 285		
		4150 C Street S.W. Cedar Rapids, Ia. 52404 Ph. (319) 362-7454		DRAWING DESCRIPTION: POLY ISO INSULATION W/O GYP. SHEATHING		
		MATERIAL:		PROJECT NUMBER:	DRAWING NUMBER:	DATE:
					S44-NFPA-04	8/30/2017
				SCALE: NTS	DRAWN BY: SC	