
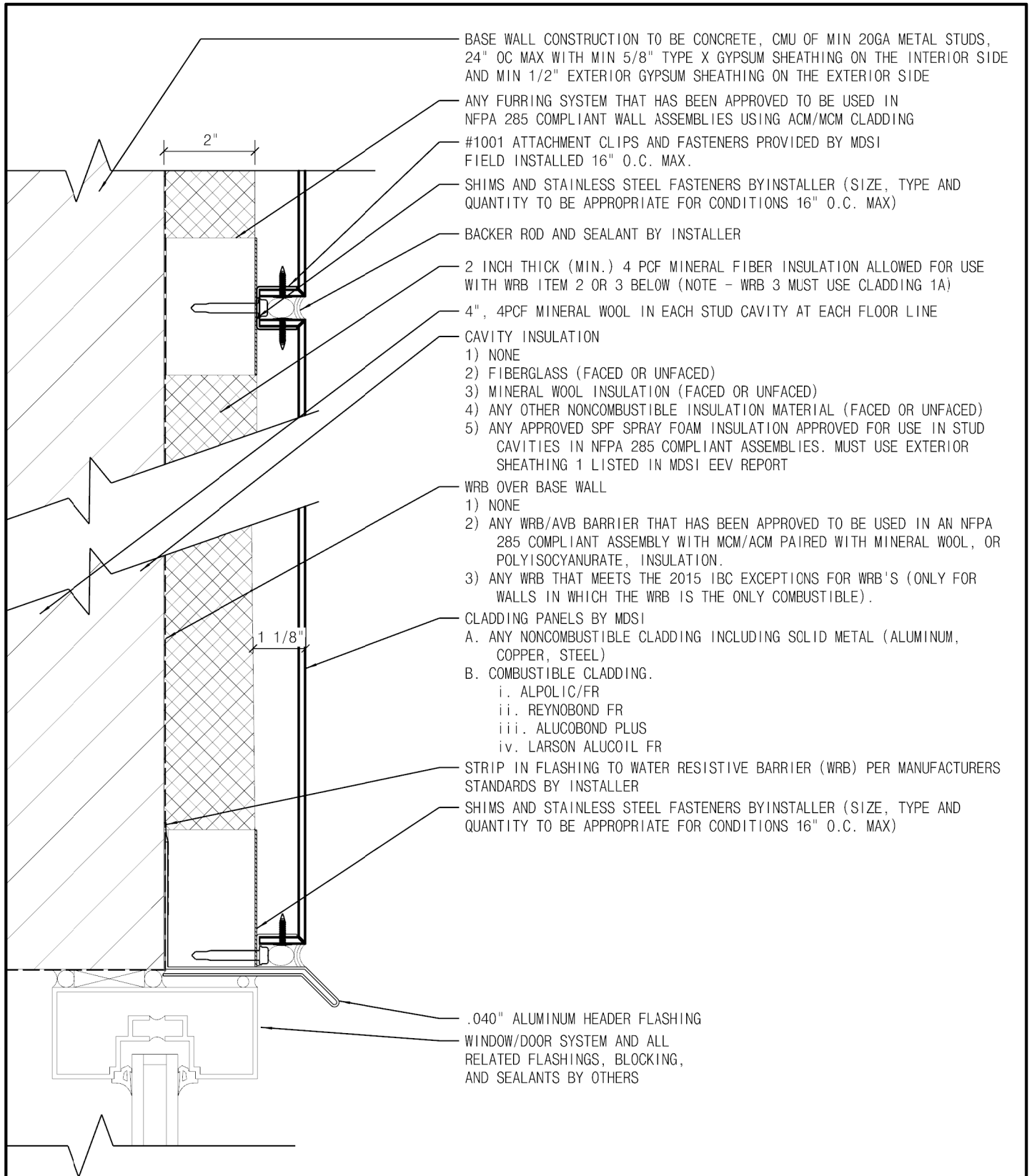



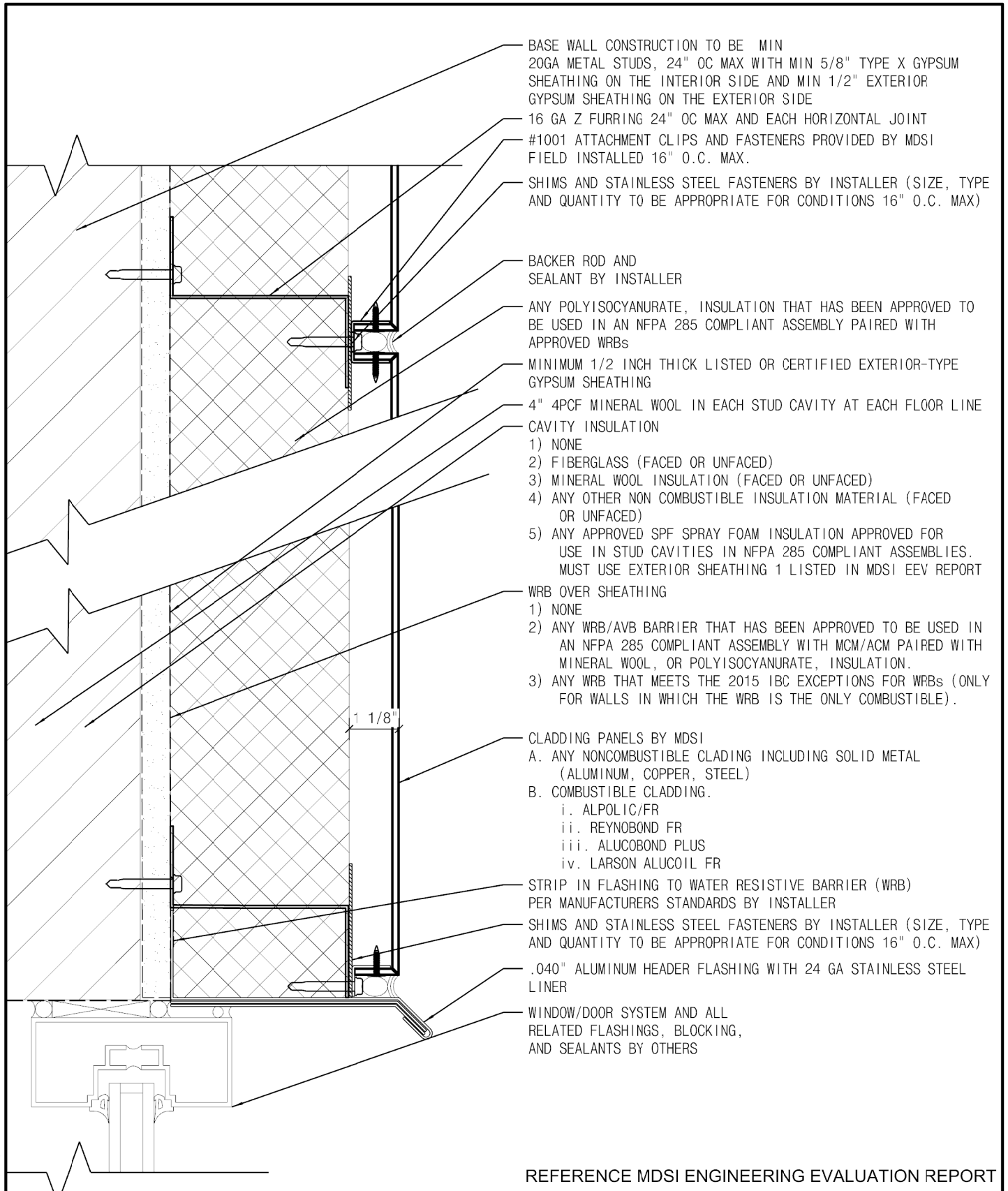
REFERENCE MDSI ENGINEERING EVALUATION REPORT

THE INFORMATION CONTAINED IN THIS DRAWING IS THE SOLE PROPERTY OF METAL DESIGN SYSTEMS. ANY REPRODUCTION IN PART OR WHOLE WITHOUT THE WRITTEN PERMISSION OF METAL DESIGN SYSTEMS IS PROHIBITED	 METAL DESIGN SYSTEMS <small>DESIGNED FOR A PERFECT FIT</small>	METAL DESIGN SYSTEMS		PROJECT: SERIES 10 NFPA - 285		
		4150 C Street S.W. Cedar Rapids, Ia. 52404 Ph. (319) 362-7454		DRAWING DESCRIPTION: NO EXTERIOR INSULATION		
		MATERIAL:		PROJECT NUMBER:	DRAWING NUMBER:	DATE:
					S10-NFPA-01	8/30/2017
				SCALE: NTS	DRAWN BY: SC	




REFERENCE MDSI ENGINEERING EVALUATION REPORT

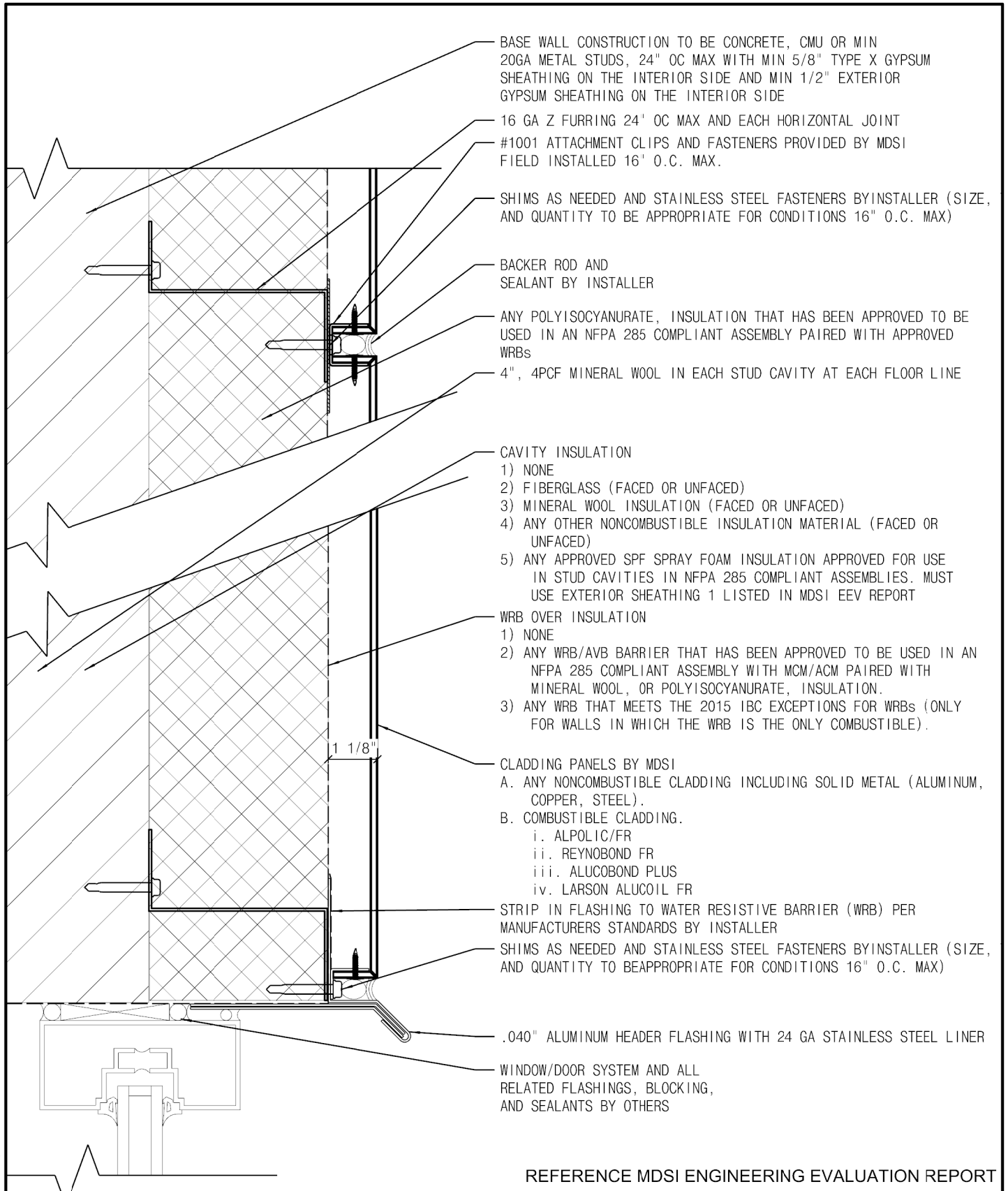
THE INFORMATION CONTAINED IN THIS DRAWING IS THE SOLE PROPERTY OF METAL DESIGN SYSTEMS. ANY REPRODUCTION IN PART OR WHOLE WITHOUT THE WRITTEN PERMISSION OF METAL DESIGN SYSTEMS IS PROHIBITED	 METAL DESIGN SYSTEMS <small>DESIGNED FOR A PERFECT FIT</small>	METAL DESIGN SYSTEMS		PROJECT: SERIES 10 NFPA - 285		
		4150 C Street S.W. Cedar Rapids, Ia. 52404 Ph. (319) 362-7454		DRAWING DESCRIPTION: FURRING SYSTEM WITH MINERAL FIBER INSULATION		
		MATERIAL:		PROJECT NUMBER:	DRAWING NUMBER:	DATE:
					S10-NFPA-02	8/30/2017
				SCALE: NTS	DRAWN BY: SC	




REFERENCE MDSI ENGINEERING EVALUATION REPORT

THE INFORMATION CONTAINED IN THIS DRAWING IS THE SOLE PROPERTY OF METAL DESIGN SYSTEMS. ANY REPRODUCTION IN PART OR WHOLE WITHOUT THE WRITTEN PERMISSION OF METAL DESIGN SYSTEMS IS PROHIBITED	 METAL DESIGN SYSTEMS <small>DESIGNED FOR A PERFECT FIT</small>	METAL DESIGN SYSTEMS		PROJECT: SERIES 10 NFPA - 285		
		4150 C Street S.W. Cedar Rapids, Ia. 52404 Ph. (319) 362-7454		DRAWING DESCRIPTION: POLY ISO INSULATION W/ GYP. SHEATHING		
		MATERIAL:		PROJECT NUMBER:	DRAWING NUMBER:	DATE:
					S10-NFPA-03	8/30/2017
				SCALE: NTS	DRAWN BY: SC	

\\crmsd\local\dfsroot\company\Company Shared Folders\MDSI Systems\Series 10\Details\CAD FILES\Series 10 NFPA 285.3dm page 4 of 4 printed 9/5/2017 9:54 last saved 9/5/2017 9:53



REFERENCE MDSI ENGINEERING EVALUATION REPORT

THE INFORMATION CONTAINED IN THIS DRAWING IS THE SOLE PROPERTY OF METAL DESIGN SYSTEMS. ANY REPRODUCTION IN PART OR WHOLE WITHOUT THE WRITTEN PERMISSION OF METAL DESIGN SYSTEMS IS PROHIBITED	 METAL DESIGN SYSTEMS <small>DESIGNED FOR A PERFECT FIT</small>	METAL DESIGN SYSTEMS		PROJECT: SERIES 10 NFPA - 285		
		4150 C Street S.W. Cedar Rapids, Ia. 52404 Ph. (319) 362-7454		DRAWING DESCRIPTION: POLY ISO INSULATION W/O GYP. SHEATHING		
		MATERIAL:		PROJECT NUMBER:	DRAWING NUMBER:	DATE:
					S10-NFPA-04	8/30/2017
				SCALE: NTS	DRAWN BY: SC	