

THE INFORMATION CONTAINED IN THIS DRAWING IS THE SOLE PROPERTY OF METAL DESIGN SYSTEMS. ANY REPRODUCTION IN PART OR WHOLE WITHOUT THE WRITTEN PERMISSION OF METAL DESIGN SYSTEMS IS PROHIBITED.

AIR/MOISTURE MEMBRANE OVER PLYWOOD SHEATHING BY OTHERS

SERIES 60 SHINGLE BY MDS

DYNA-COAT TORX T-17 12-11 X 1-1/4" OR EQUAL WALL FASTENER BY INSTALLER

FIELD CUT SHINGLE BY INSTALLER

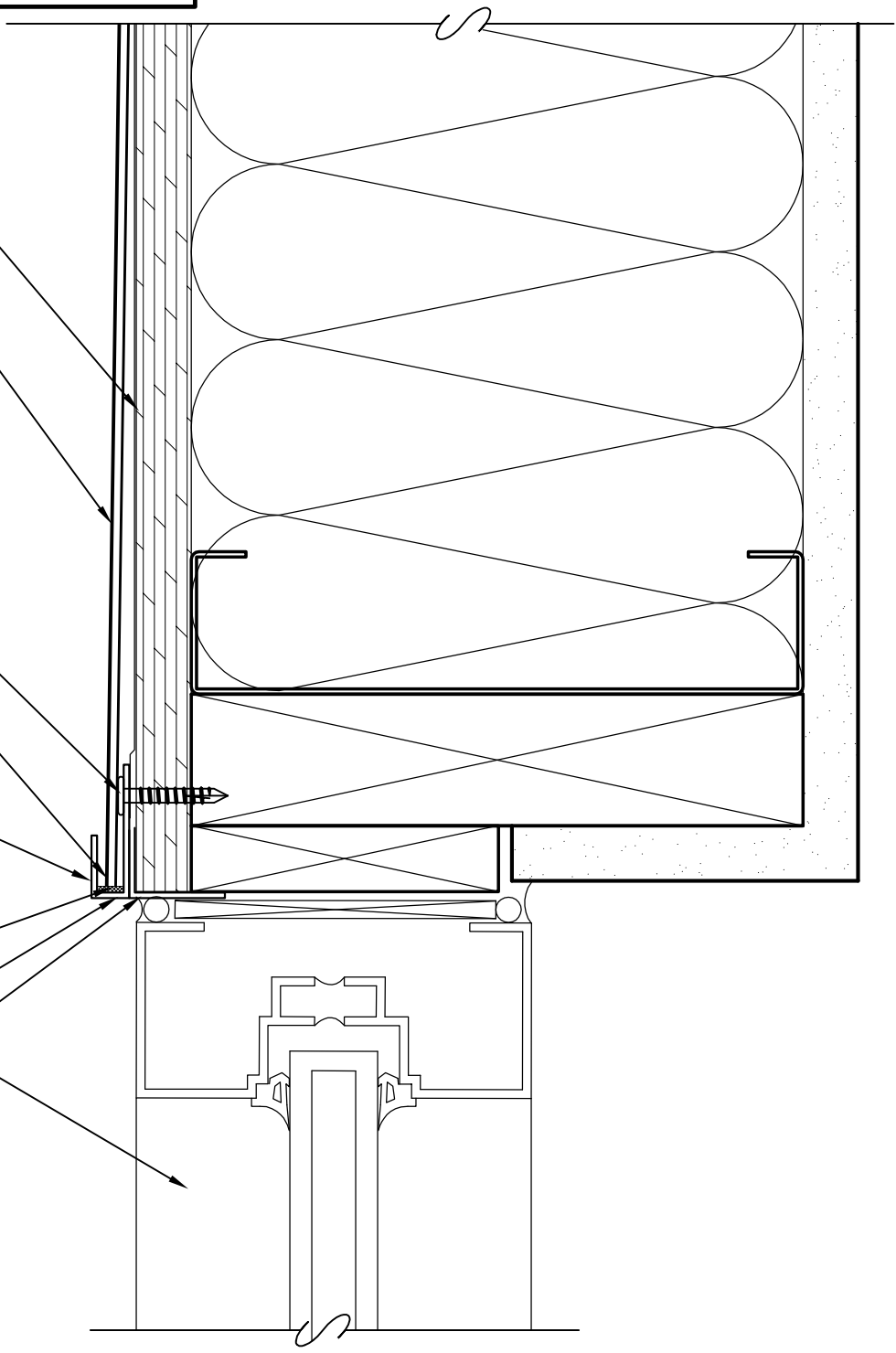
INSTALLER TO DRILL 5/16" WEEP HOLES IN FACE OF FLASHING 4'-0" O.C.

SEALANT BY INSTALLER

'J' TRIM BY MDS

WINDOW FLASHING BY OTHERS

STOREFRONT SYSTEM AND ALL RELATED FLASHINGS, BLOCKING AND SEALANTS BY OTHERS



METAL DESIGN SYSTEMS

4150 C Street S.W.
Cedar Rapids, Ia. 52404
Ph. (319) 362-7454

PROJECT
MDS SERIES 60 ACM

DWG. DESCRIPTION
HEAD DETAIL-STOREFRONT SYSTEM

METAL DESIGN SYSTEMS

DESIGNED FOR A PERFECT FIT

MATERIAL

PROJECT NO.

DWG NO. S60-ACM-08

REV

FINISH

SCALE AS NOTED

DRAWN BY: DJR

DATE: 10/14/10

VERSION: 601010